



**KLINGELNBERG
GROUP**

Red-Hot for Tissue

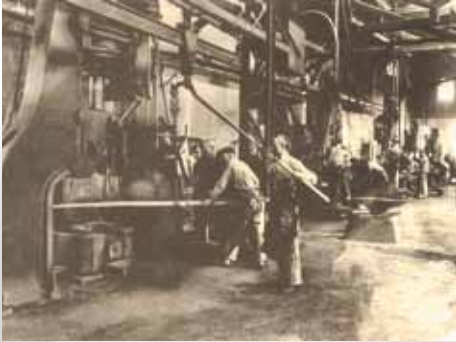


BLADES, KNIVES AND ACCESSORIES
FOR THE TISSUE INDUSTRY

IKS KLINGELNBERG GROUP · THE KNIFE MANUFACTURERS

 DIVISION PAPER





Tradition

ABOUT US

A long tradition signifies commitment. The history of our company can be traced back to 1863 with the manufacturing of machine knives beginning in 1908. IKS Klingelberg today is one of the oldest machine knife manufacturers in existence in Germany's region known as „Bergisches Land“. Over the centuries, this region has built a solid reputation worldwide for manufacturing only the

highest quality knives.

Through close cooperation with converting machine manufacturers and intensive partnerships with innovative customers, our dedication, consistency and competence forms the basis for continued development and the successful growth of IKS Klingelberg in the tissue industry.

QUALITY EXCEEDS CURRENT INDUSTRY STANDARDS

In today's tissue industry, converting facilities are under constant pressure to optimize their production, meet shorter delivery demands and reduce costs, all without compromising the quality of their finished products. Now more than ever, high speed machines need high performance cutting tools. As the premium manufacturer of such tools, IKS Klingelberg has specialized in this field by being able to work very closely with tissue manufacturers from all over the world.

Our highly skilled Product Specialists can provide technical advice, show you how you can improve your operation and help to

find cost cutting solutions for your operation. Our specialists can also provide training and seminars on site and keep you up to date on our latest product developments. **We can optimize your converting department's cutting processes.**

Based on specially designed state of the art production equipment and the best heat treatment and surface finishing in the industry, our logsaw blades consistently have a higher quality and longer life. Both of which can help to improve your converting bottom line. **Our bottom line ~ We provide the reliability and quality that you need and demand in machine knives.**



IKS Klingelberg GmbH, Remscheid
Headquarters

PRODUCTS

Log Saw Blades

IKS Klingelberg is well known for its high quality log saw blades. We are in the position to produce blade diameter up to 1200 mm.

We produce blades for all existing log saw machines, e.g. PERINI, PCMC, Futura, Kawano Zoki, Bretting, MTC and more.



Log saw blades

MATERIAL GRADES AVAILABLE ARE:

CHROMAVAN

Chrome-Vanadium alloyed Tool Steel
Economically priced log saw blade

CHROMALIT

High Carbon High Chrome (HCHC) Steel
Today's most produced and sold quality.
We developed a special version for the use in combination with the lubrication system.

DURITAN

High Speed Steel (HSS)
Best performance for the latest generation of fast running log saw machines with 3 or 4 infeed lanes. The life time of DURITAN blades is significantly higher than CHROMALIT. Apart from that, we recommend a special knife version in combination with our lubrication system for the best performance.



Blade at work



Log saw blades in crate



Cutting edge protection with metal inlay for higher operational safety



KLINGELNBERG

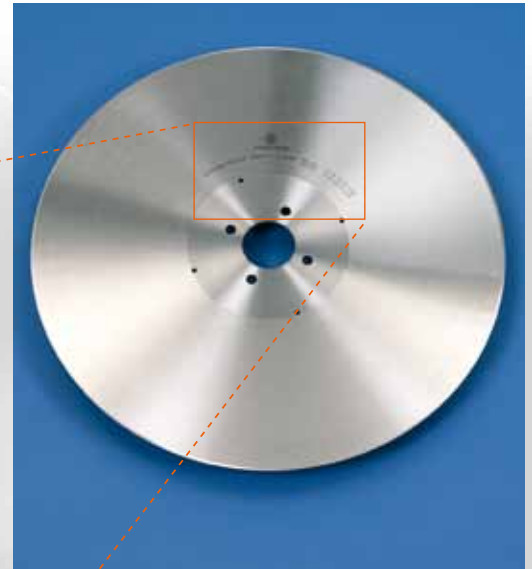
BLADES, KNIVES AND ACCESSORIES FOR THE TISSUE INDUSTRY

UNIQUE BLADE QUALITY CERTIFICATION

Automatic check and laser engraving of all relevant parameters



Detail



Log saw blade

CBN GRINDING WHEELS

Always the right choice to complement our blades!
We offer grinding wheels for machines like PERINI, PCMC, Italconverting, Bretting, MTC, Kawano Zoki and others. Special grinding wheels have been designed in use with our high performance blades and lubrication system, which give you:

- Fewer sparks
- Better superior blade edge
- Longer life time
- Less product contamination



CBN Grinding wheel and dressing stick



CBN Grinding wheels



PERFORATION AND ANVIL KNIVES

PERINI

All sizes, bond patterns and anvil knives are available in bimetal and carbon steel.

PCMC

All sizes and bond patterns are available in HSS and PM-Steel. The anvil knives are produced from solid tungsten carbide.

Perforation and anvil knives are also available for other machine types like Bretting and Kawano Zoki.



Perforation and anvil knives Perini



Perforation and anvil knives PCMC

LUBRICATION SYSTEM AND LUBRIKS-05

The lubrication system, with IKS Klingelberg's newly developed lubricant LUBRIKS-05 supports the idea of a perfect cut along with a faster cutting speed. The water based lubricant (95% water) is atomized onto the blade surface by high tech spray nozzles. The water evaporates, leaves a film on the blade which prevents glue build up and reduces friction between blade and product to a minimum.

The combination of IKS Klingelberg's log saw blades, grinding wheels and lubrication system provides the highest level of efficiency for your log saw machine.



Lubrication System and Lubriks-05

SHEET PRODUCTS

1. Machine knives for handkerchief production

We produce knives for the following machine types:

- W+D
- Senning
and others



2. Machine knives for napkin production

We produce knives for the following machine types:

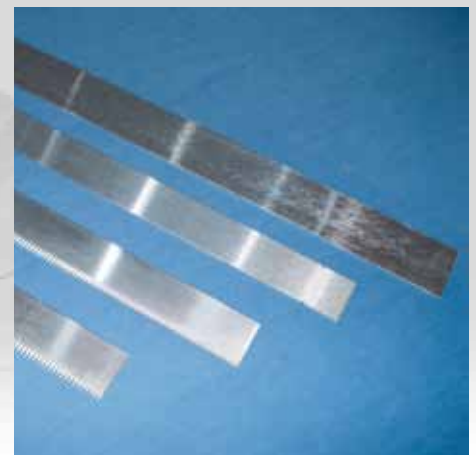
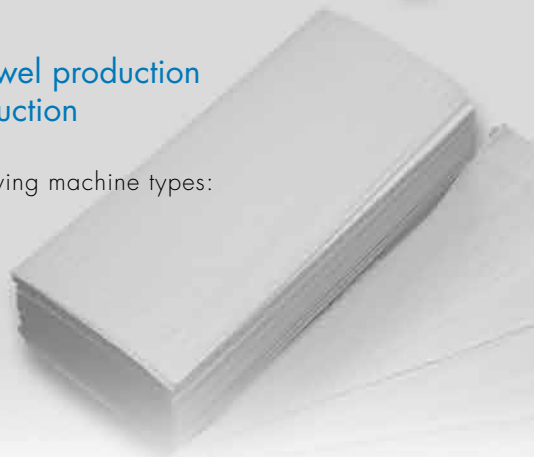
- W+D
- Senning
- Bretting
- Serv-o-tec
- Hobema
- Omet
and others



3. Machine knives for towel production and facial tissue production

We produce knives for the following machine types:

- Bretting
- Hobema
- Serv-o-tec
and others



MISCELLANEOUS

1. Packaging knives

We produce knives for the following machine types:

- TMC
 - Casmatic/Wrapmatic
 - Amotek
 - Optima
 - Senning
 - Serv-o-tec
 - Cassoli
- and others

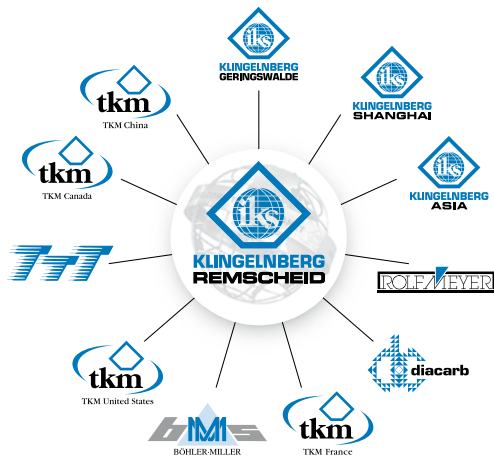


2. Stainless steel Doctor Blades for flexo printing and glue scraping

We produce knives for the following machine types:

- Perini
 - PCMC
 - Futura
- and others





DIE IKS KLINGELBERG GRUPPE THE IKS KLINGELBERG GROUP



-
- | | |
|--|--|
| <p>MESSER FÜR DIE
PAPIER-INDUSTRIE</p> <p>MESSER FÜR DIE
METALL-INDUSTRIE</p> <p>MESSER FÜR DIE
HOLZ-INDUSTRIE</p> <p>MESSER FÜR DIE
KUNSTSTOFF-, GUMMI-
& RECYCLING-INDUSTRIE</p> | <p>KNIVES FOR THE
PAPER-INDUSTRY</p> <p>KNIVES FOR THE
METAL-INDUSTRY</p> <p>KNIVES FOR THE
WOOD-INDUSTRY</p> <p>KNIVES FOR THE
PLASTIC, RUBBER &
RECYCLING INDUSTRY</p> |
|--|--|

Please contact the IKS Klingelberg GmbH
for further contacts all over the world!



IKS KLINGELBERG GMBH

Headquarters & Sales
In der Fleute 18
D-42897 Remscheid
Germany
T: +49 (0) 2191-969-0
F: +49 (0) 2191-969-111
E-Mail: info@interknife.com
www.interknife.com



IKS Klingelberg GmbH, Remscheid



ROLF MEYER GMBH

Sales & Production
Heinrich-Hertz-Straße 17
22941 Bargteheide
Germany
T: +49 (0) 4532 / 400-0
F: +49 (0) 4532 / 400-200
E-mail: info@rolfmeyer.de
www.rolfmeyer.de



Rolf Meyer GmbH, Bargteheide



IKS KLINGELBERG GERINGSWALDE GMBH

Production
Mittweidaer Straße 44
D-09326 Geringswalde
Germany
Tel. +49 (0) 37382-846-0
Fax +49 (0) 37382-846-24
E-Mail: iksgw@interknife.com
www.interknife.com



IKS Messerfabrik Geringswalde GmbH, Geringswalde

